

# The Kelp Node

A transboundary (US – Canada) network  
of kelp practitioners

Jasmin M. Schuster<sup>1,2,3</sup>, Amanda E. Bates<sup>2</sup>, Helen Berry<sup>4</sup>, Danielle Claar<sup>4</sup>, Maycira Costa,  
Megan Dethier<sup>5</sup>, Hilary Hayford<sup>6</sup>, Sharon Jeffery<sup>8</sup>, Lynn Lee<sup>7</sup>, Joanne Lessard<sup>8</sup>, Dayv  
Lowry<sup>9</sup>, Chris Neufeld<sup>10,11</sup>, Luba Y. Reshitnyk<sup>1</sup>, Ross Whippo<sup>12</sup>, Margot Hessing-Lewis<sup>1</sup>





# The Ocean Decade

The science we need for the ocean we want.

Global Challenges require Global Action.

Transboundary Challenges require Transboundary Action.



2021 United Nations Decade  
of Ocean Science  
2030 for Sustainable Development

# Transboundary Initiatives in the NE Pacific

Pacific Ocean

Strait of  
Georgia

Juan de Fuca Strait

Puget  
Sound

# The Salish Sea



United Nations Ocean Decade



Marine Life 2030 Global Programme



Northeast Pacific Biodiversity Action Network (BioActNet)

Kelp Node

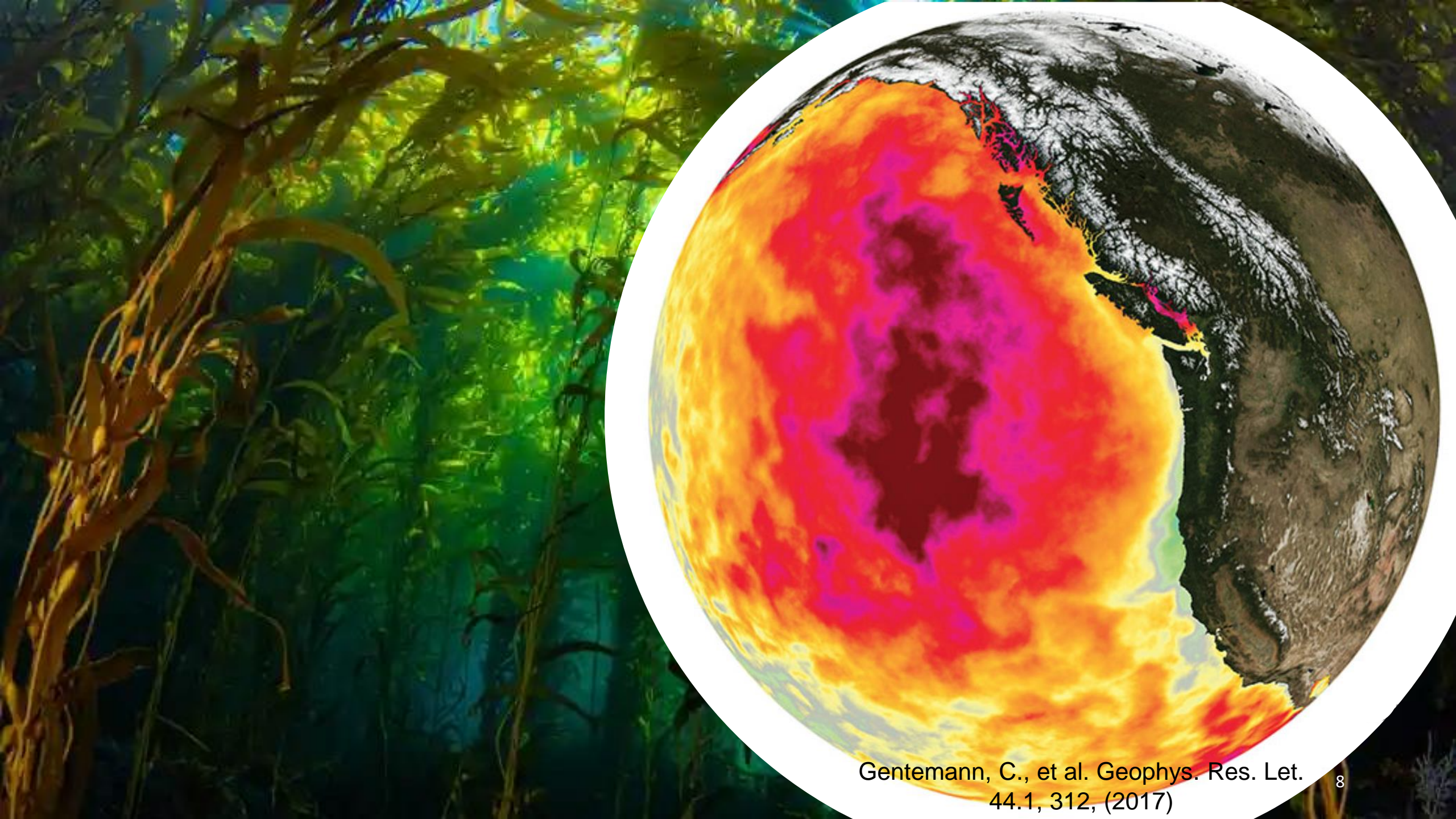
- Kelp Node
- Seagrass Node
- Invertebrates Node
- Fish Node
- Microbes Node
- Plankton Node



2021 United Nations Decade of Ocean Science for Sustainable Development 2030







Gentemann, C., et al. *Geophys. Res. Lett.*  
44.1, 312, (2017)



# Aims of the Kelp Node

*Advance kelp conservation, management and recovery in shared BC & WA waters by implementing and expanding collective actions through working groups and linked kelp science activities.*

Create an inclusive cross-border network of working groups that:

- Gives rise to a 'Transboundary Kelp Plan' and
- Develops regional kelp forest trends reporting

# THE KELP NODE

Kelp Node Coordinators  
&  
Leadership Team

**WG1**

**WG2**

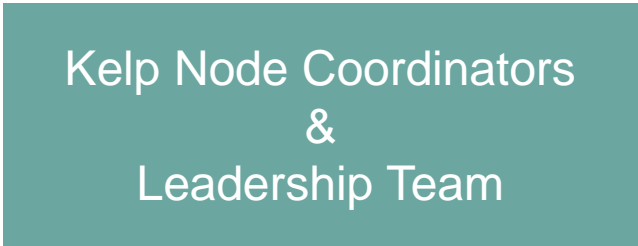
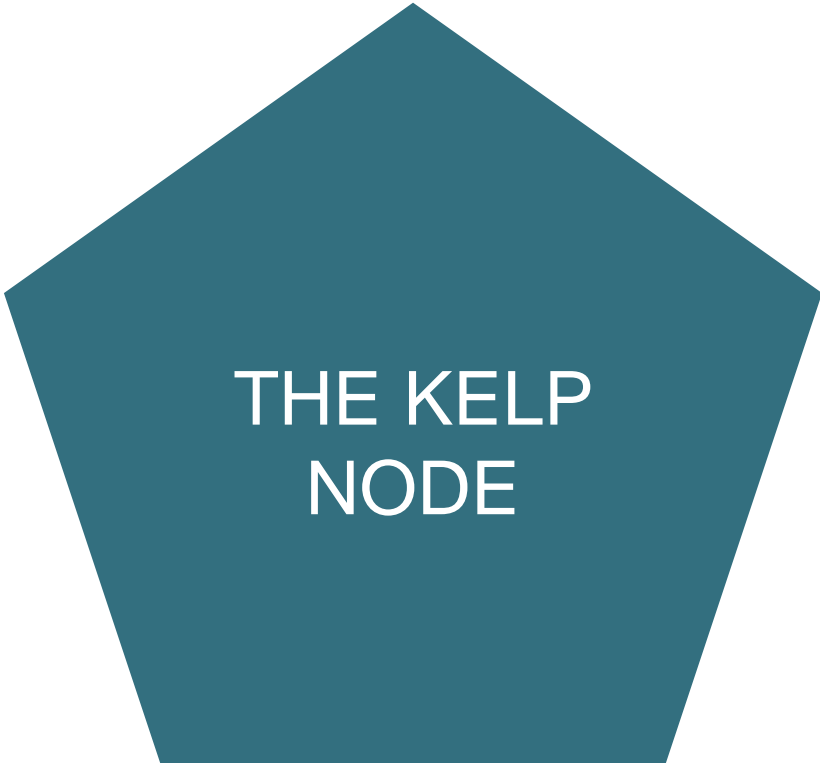
**WG3**

**WG4**

**WG5**

**WG6**

# Biodiversity Action Cycle: a KNOWLEDGE to ACTION framework



WG1

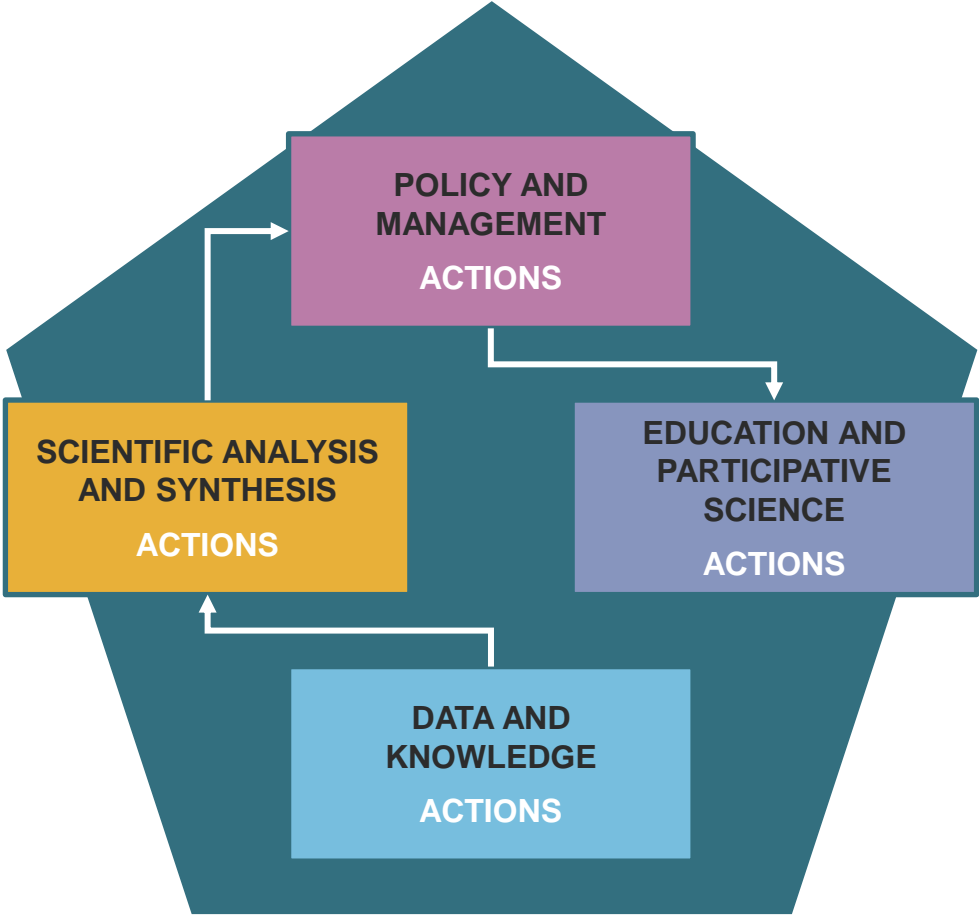
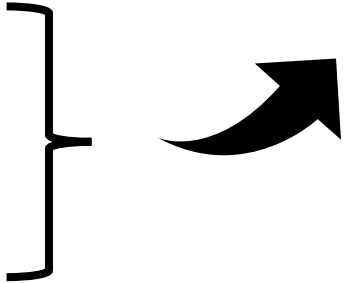
WG2

WG3

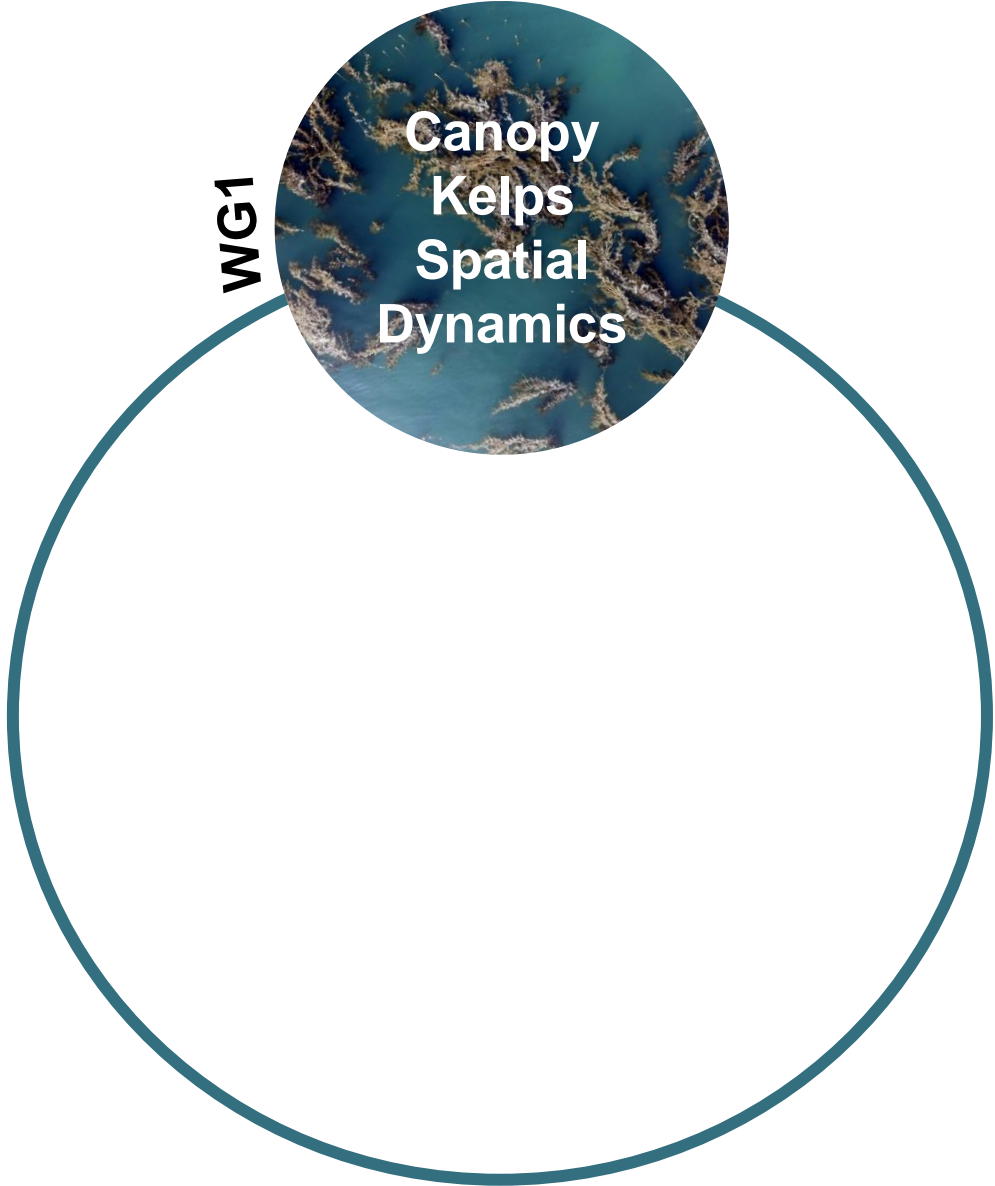
WG4

WG5

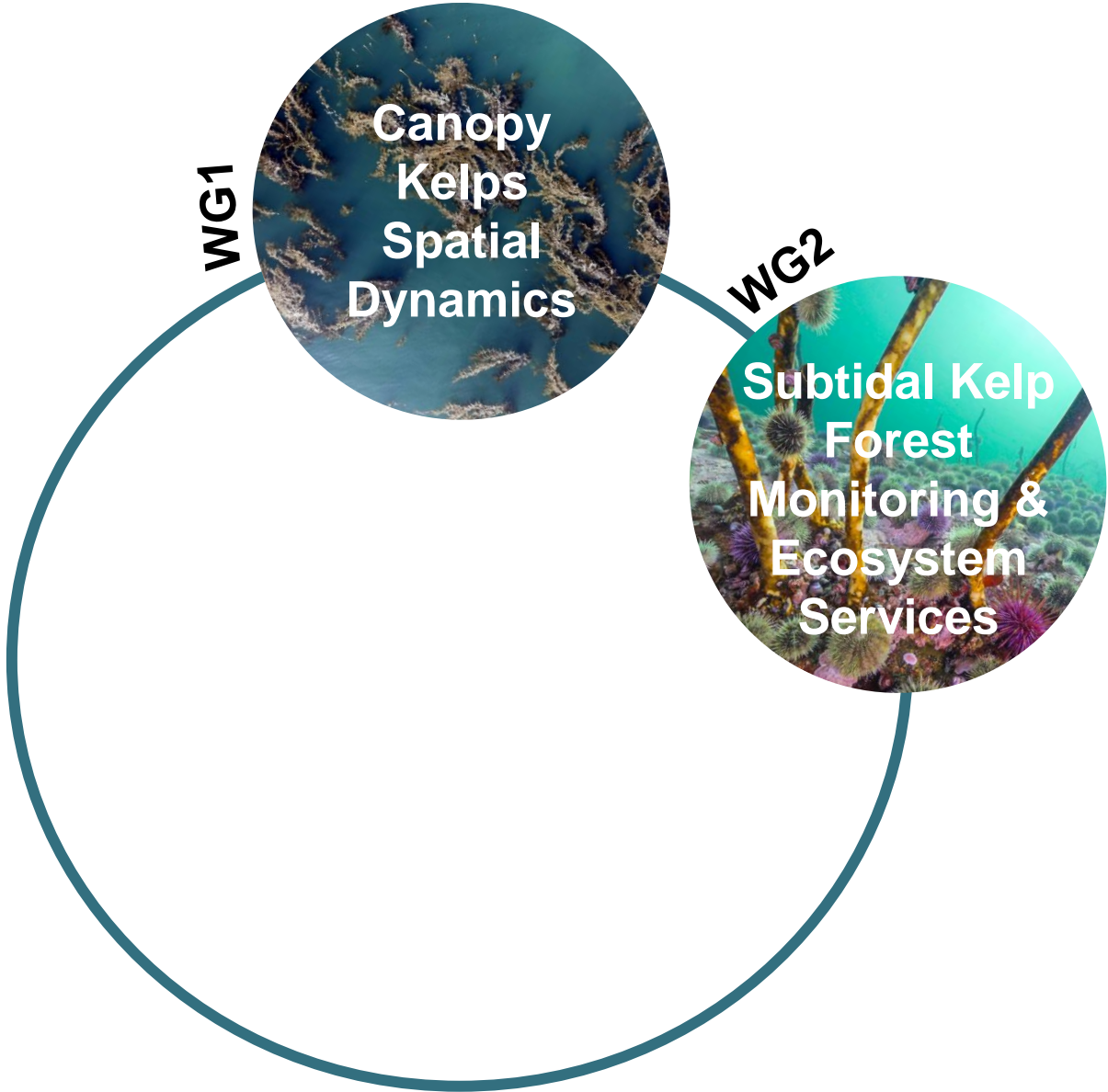
WG6



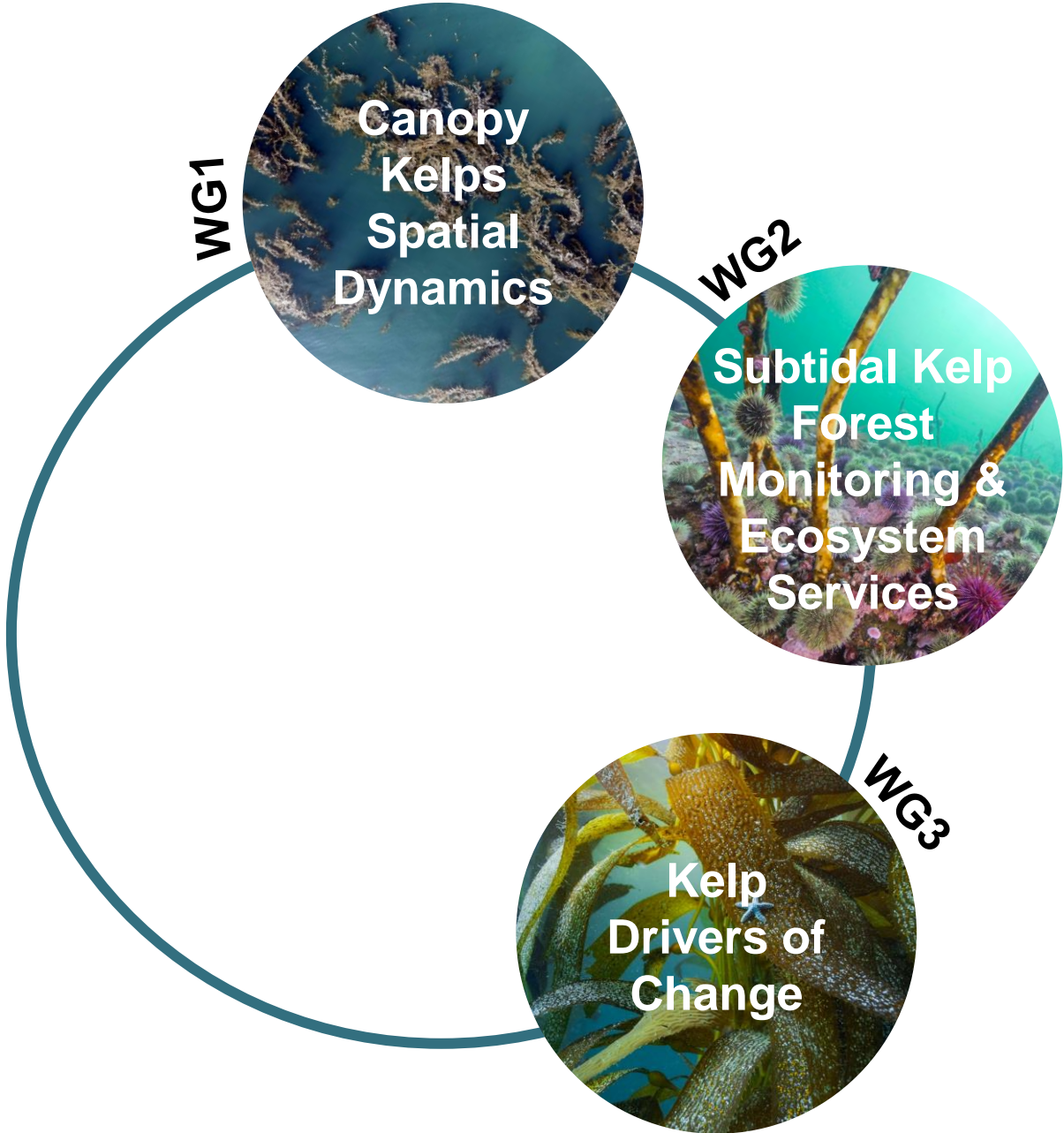
Kelp Node  
Working  
Groups



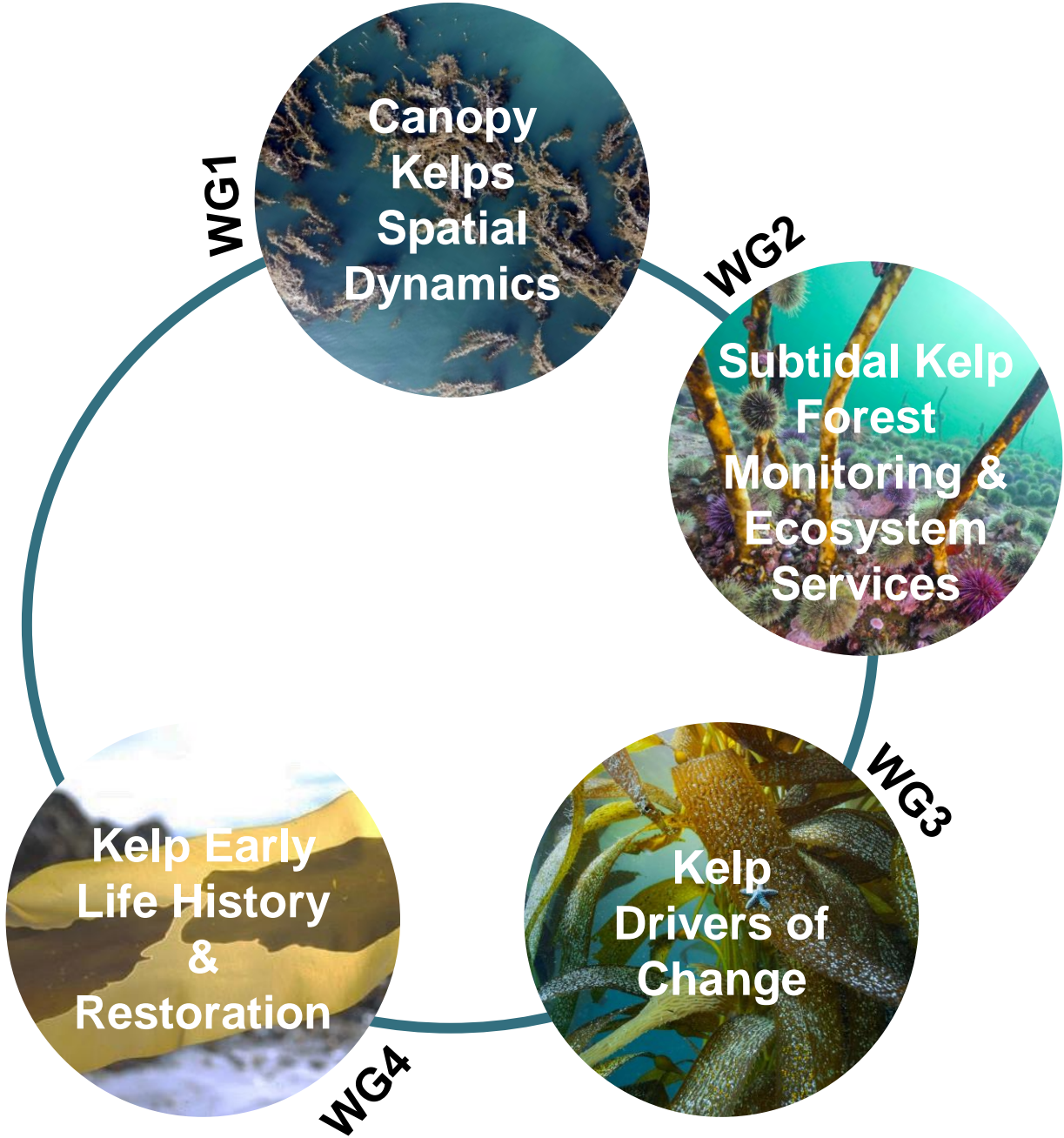
# Kelp Node Working Groups



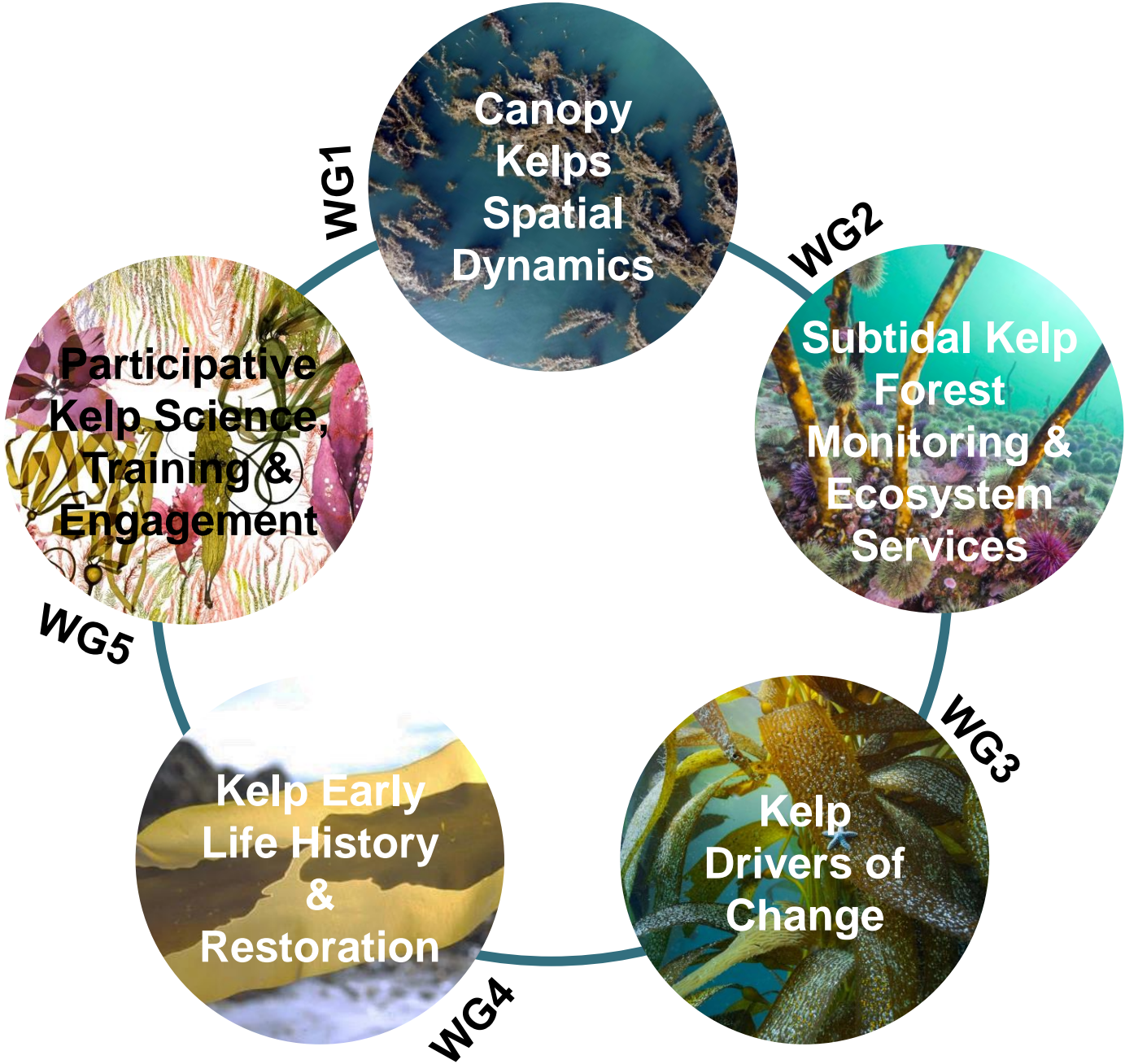
# Kelp Node Working Groups



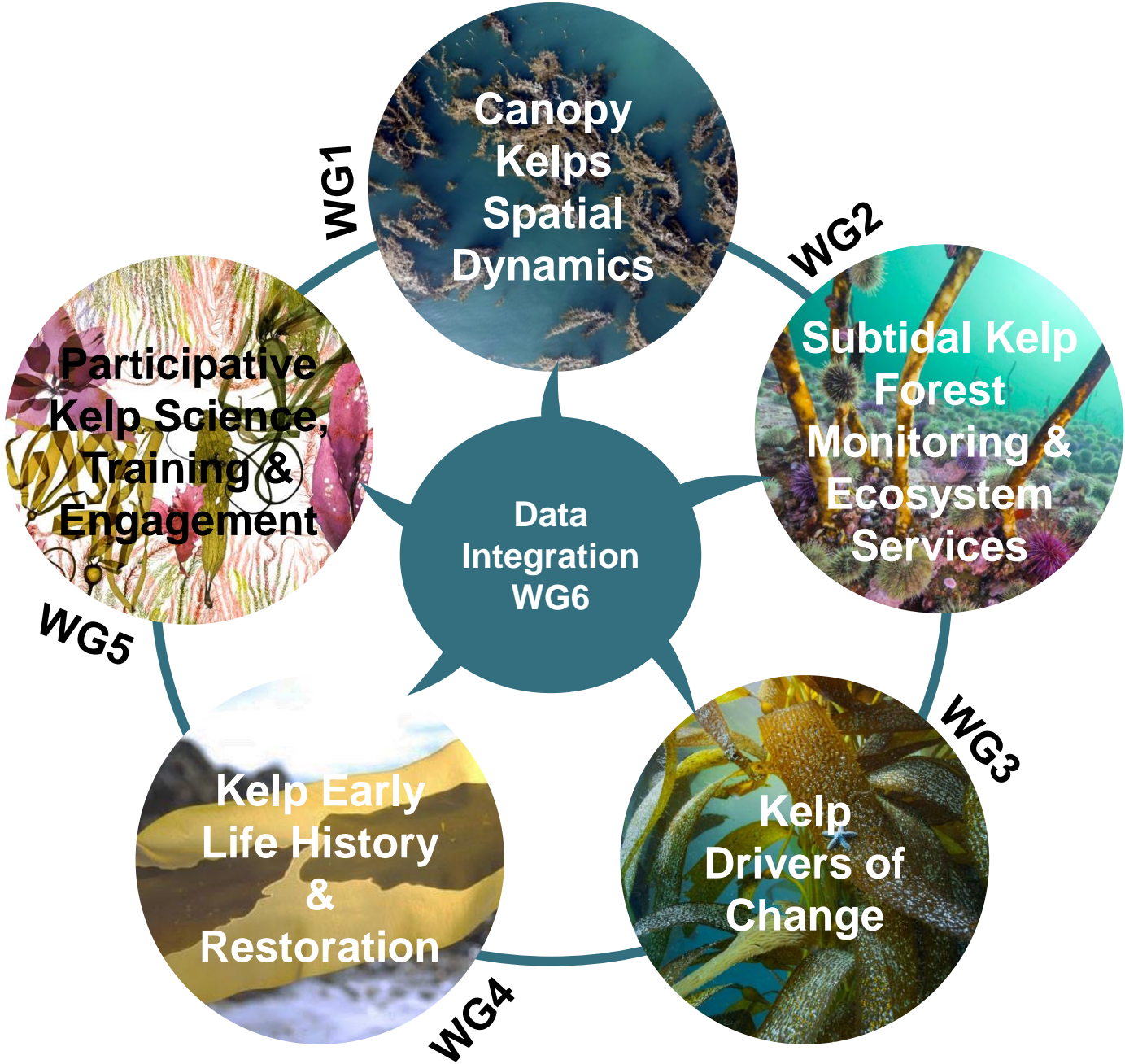
# Kelp Node Working Groups



# Kelp Node Working Groups



# Kelp Node Working Groups

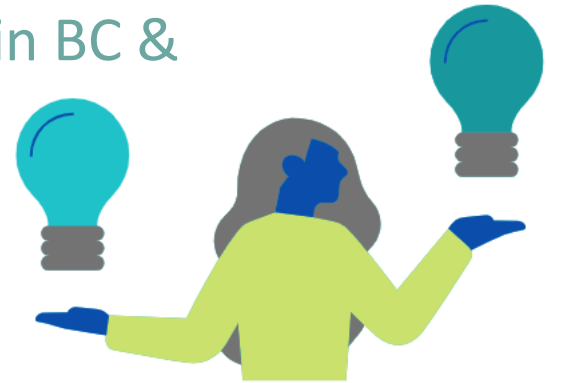


# Goals & Actions (WG1 Example):

1. Review of methodologies for mapping kelp in BC/WA
2. Inventory of existing spatial data on canopy kelps
3. Develop a transboundary approach for mapping canopy kelp distributions (with an end goal to report out on large-scale regional trends in kelp distribution)

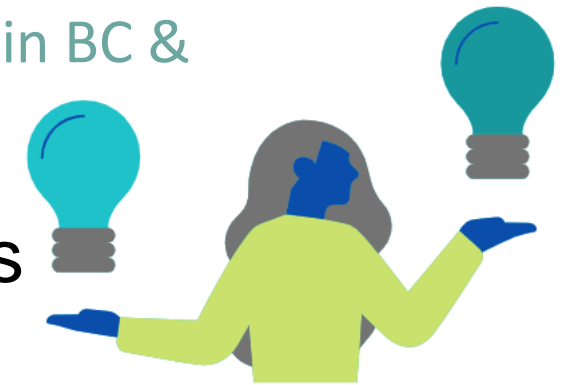
# Goals & Actions (WG1 Example):

1. Review of methodologies for mapping kelp in BC/WA
  - a. Sensitivity analysis of different canopy kelp mapping tools in BC & WA (who is doing what where, what works best?)



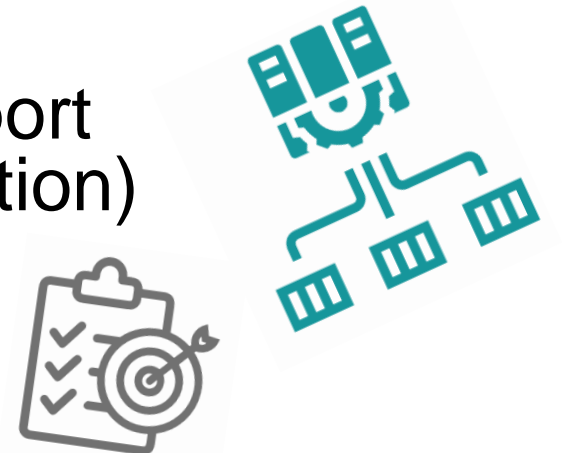
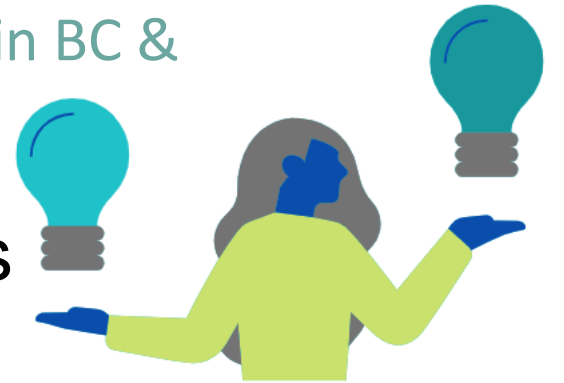
# Goals & Actions (WG1 Example):

1. Review of methodologies for mapping kelp in BC/WA
  - a. Sensitivity analysis of different canopy kelp mapping tools in BC & WA (who is doing what where, what works best?)
2. Inventory of existing spatial data on canopy kelps
  - a. Create a spatial/imagery database (metadata-focused)

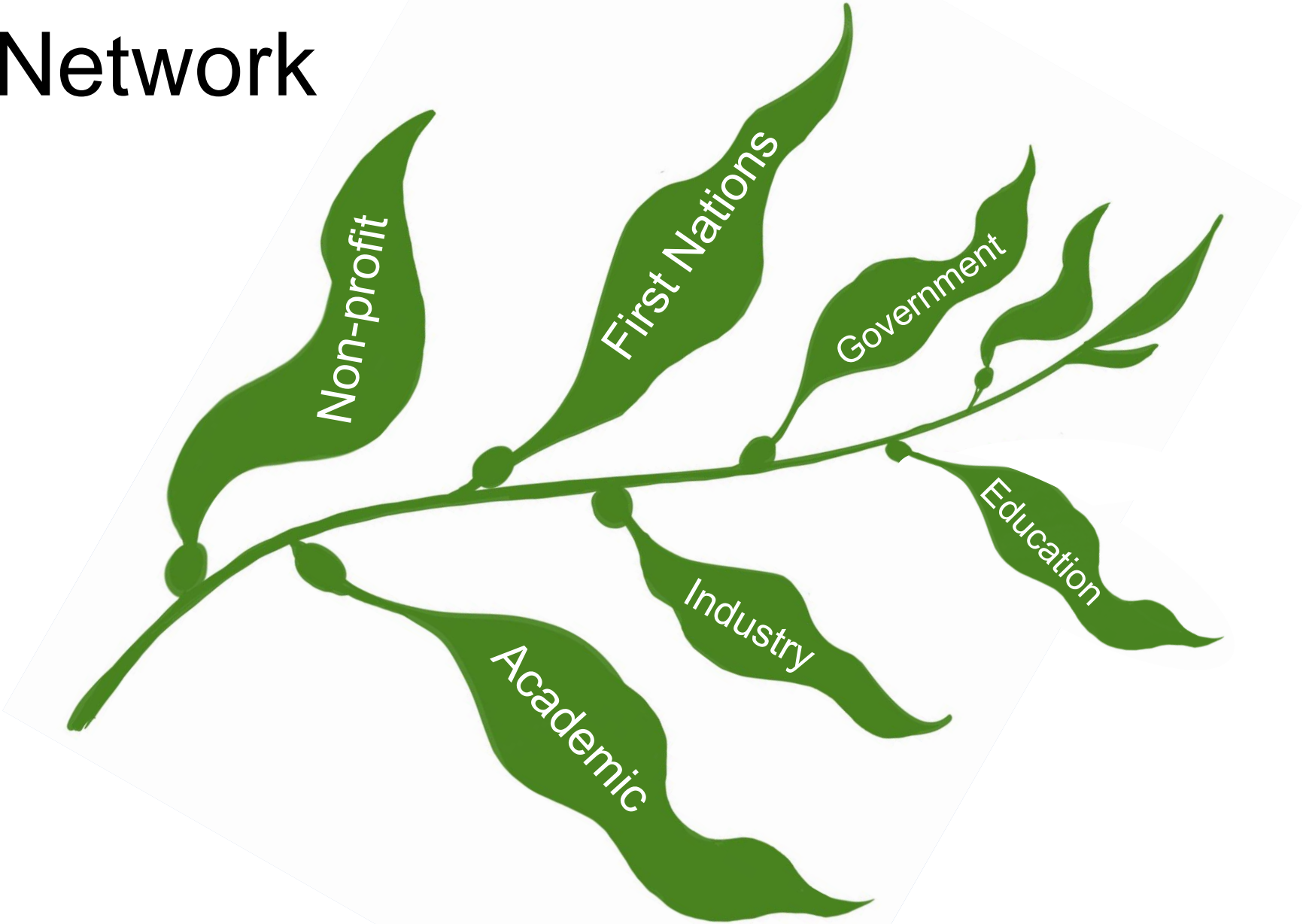


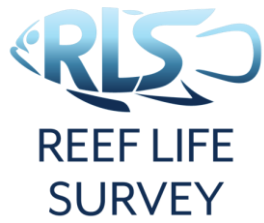
# Goals & Actions (WG1 Example):

1. Review of methodologies for mapping kelp in BC/WA
  - a. Sensitivity analysis of different canopy kelp mapping tools in BC & WA (who is doing what where, what works best?)
2. Inventory of existing spatial data on canopy kelps
  - a. Create a spatial/imagery database (metadata-focused)
3. Develop a transboundary approach for mapping canopy kelp distributions (with an end goal to report out on large-scale regional trends in kelp distribution)
  - a. Provide technical feedback on Kelp Vital Signs



# The Network





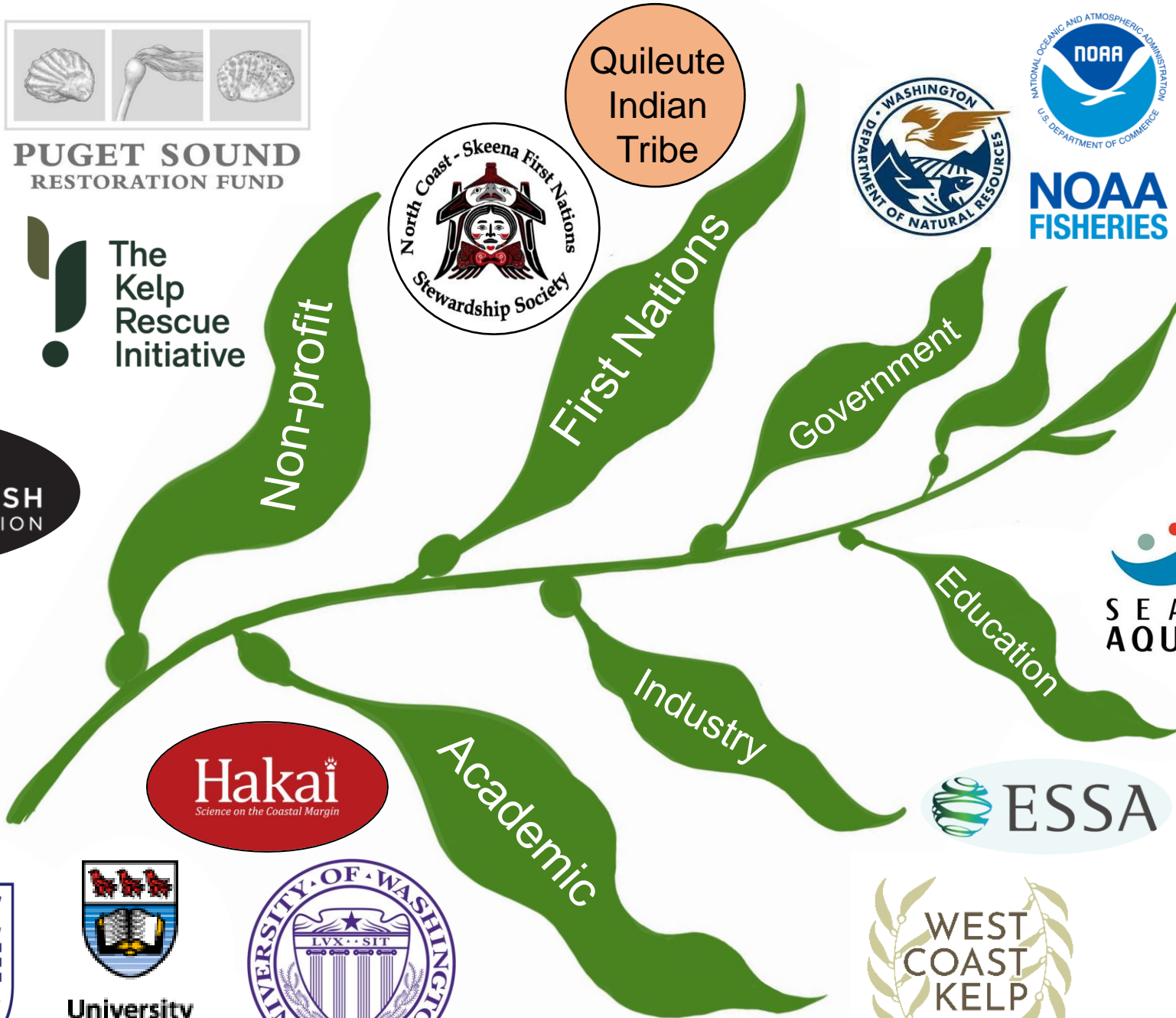
Tula  
TULA FOUNDATION



Quileute  
Indian  
Tribe



Fisheries and Oceans  
Canada



NORTH ISLAND  
COLLEGE



University  
of Victoria



& more

An underwater scene showing a dense kelp forest. The water is a clear, light blue-green color. The kelp stalks are brown and rise from the bottom, with long, flat, green blades extending horizontally. Some blades are in sharp focus in the foreground, while others are blurred in the background, creating a sense of depth. The overall atmosphere is serene and natural.

## **Lessons from ITRS:**

- Kelp is having a moment
- The time to come together and act is now!



## **Lessons from ITRS:**

- Kelp is having a moment
- The time to come together and act is now!

*Let's move together at the speed of trust*

